

Danger Zones Along the Proposed Route of LNG Trains from Wyalusing PA to Gibbstown NJ

By Richard Redding, April 19, 2023

A New York investment firm, Fortress Transportation and Infrastructure Investors LLC, is developing a major liquid natural gas (LNG) export terminal on the Delaware River near Gibbstown NJ. The Fortress firm proposes to construct a natural gas processing plant in Wyalusing PA where it would convert fracked gas to LNG. The liquified gas would then be shipped to Gibbstown by rail or truck, using several 100-car trains of LNG a day, or up to 700 tractor-trailer trucks per day. From Gibbstown’s Repauno Terminal, LNG would be exported using specially-designed tanker ships.

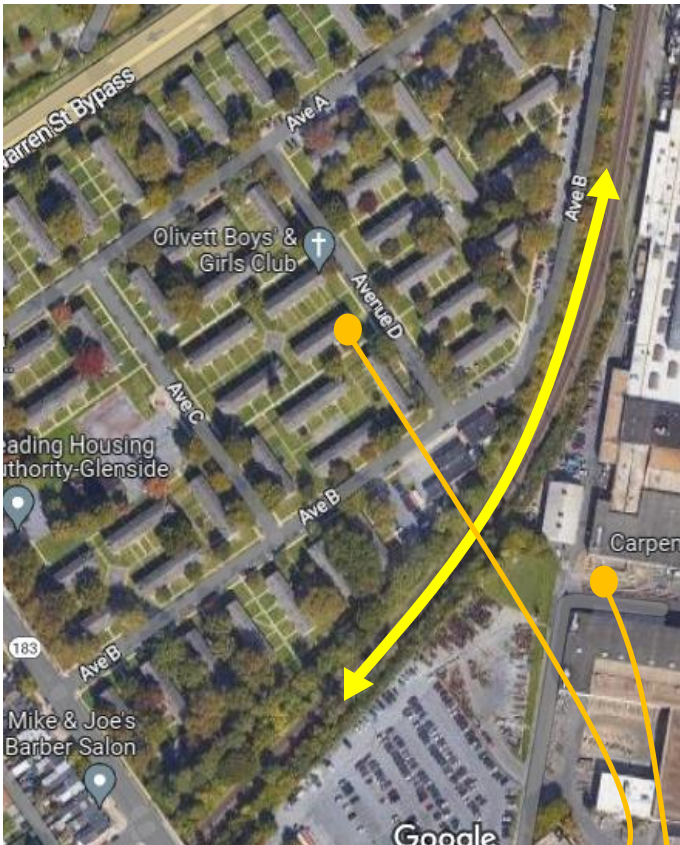
The Wyalusing-to-Gibbstown proposal has been studied extensively by the Fractracker organization and the Delaware Riverkeeper Network. Their studies look at the unique dangers of LNG transport, environmental issues, impacts on vulnerable populations, and the regulatory status of the Fortress proposal.

This report seeks to add to that existing body of work by identifying danger zones or “hot spots” where people are living adjacent to the train tracks, or where schools, day care facilities, offices, factories or hospitals exist along the route. Transport by truck is not addressed here. The focus is on rail transport only.

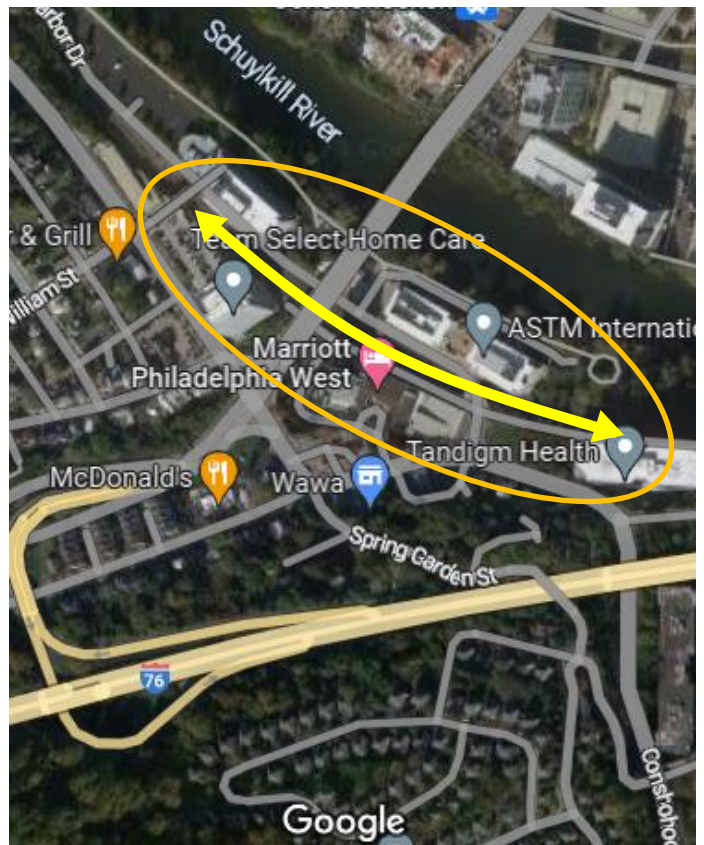


The map above shows a likely rail route from Wyalusing to Gibbstown. The map appears on the websites of Fractracker and the Delaware Riverkeeper Network. This route is the basis for the maps that follow.

In the maps below, the route of the railroad is shown with a bold yellow line, with arrows.



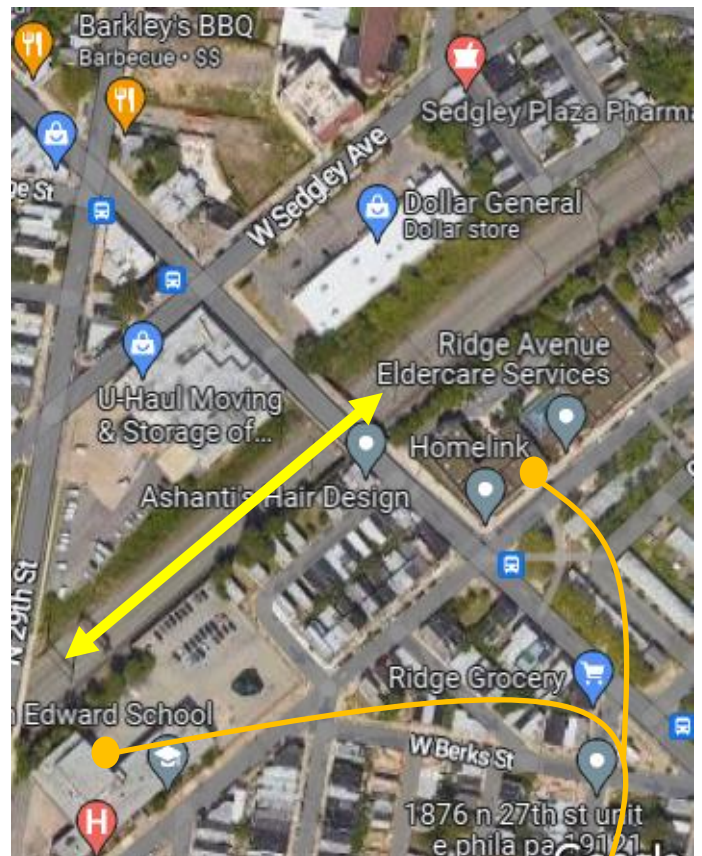
Reading PA-- Reading Housing Authority/ Glenside (400 families) & Carpenter Technology (approx. 700 jobs)



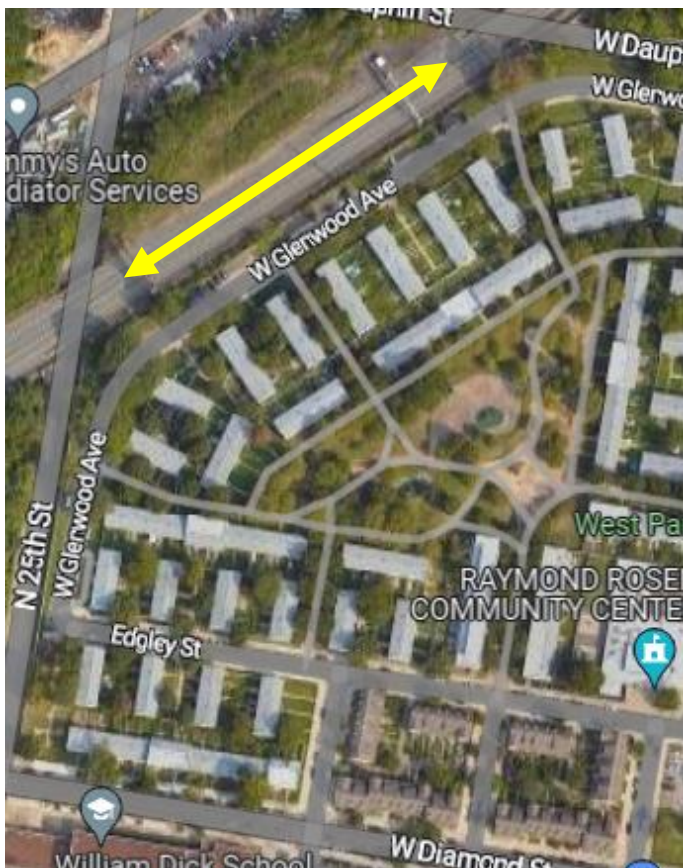
West Conshohocken PA: 5 office buildings (1 million sq.ft. total) and Marriott Hotel Phila. West (288 rooms)



North Philadelphia- school (118 students), apartments (49), day care center, Eastern Lofts apartments (37 units)



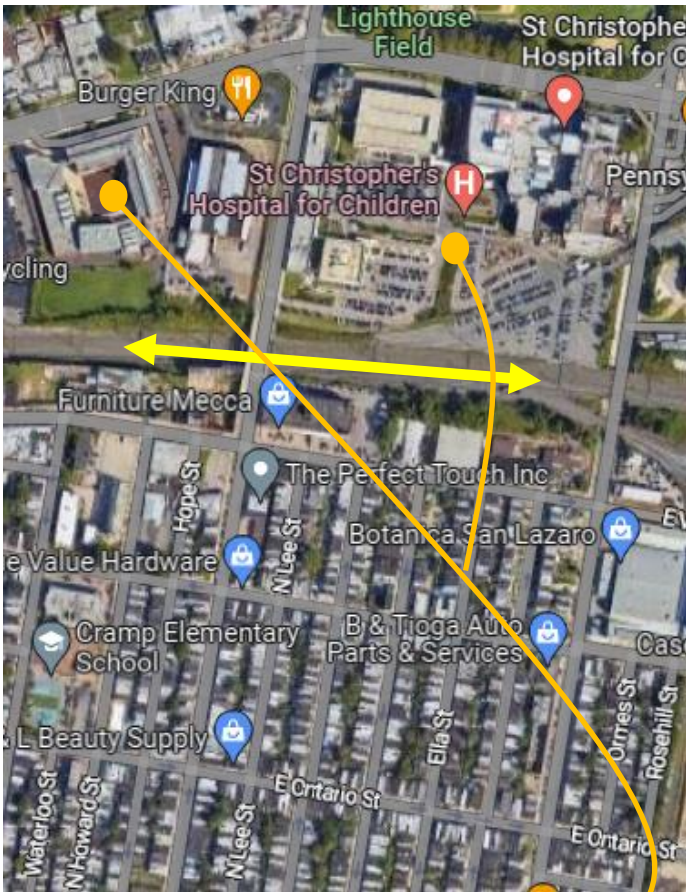
North Philadelphia- Edward Gideon School (267 students) (and Ridge Ave. housing for seniors (64 units)



North Philadelphia – Raymond Rosen Apartments (552 families, some are 120 ft. from railway)



North Philadelphia – charter school (371 students) and 2 head start learning centers, all adjacent to the railway.



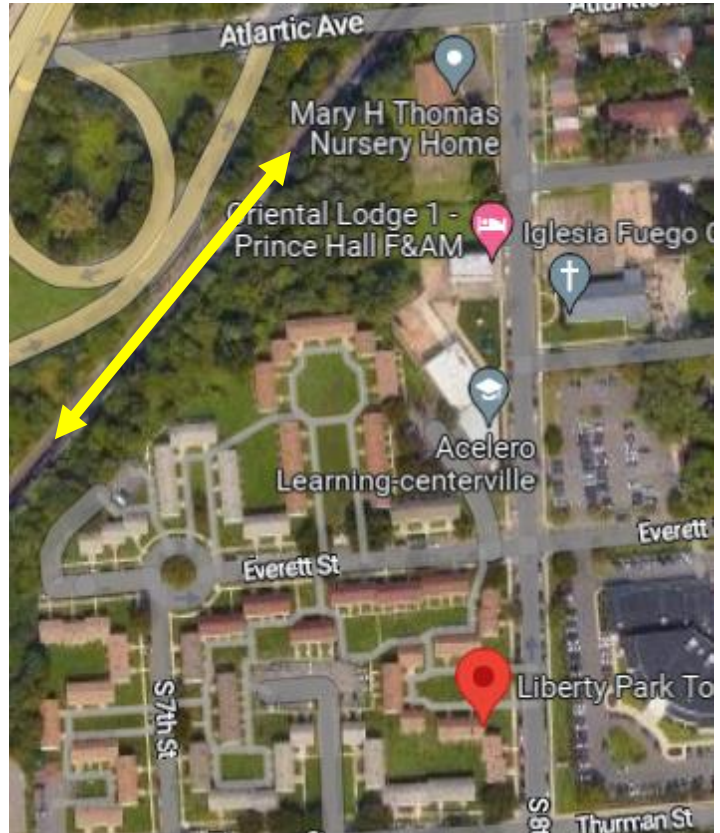
North Philadelphia – St. Christopher’s Hospital for Children and Clemente Middle School (316 students)



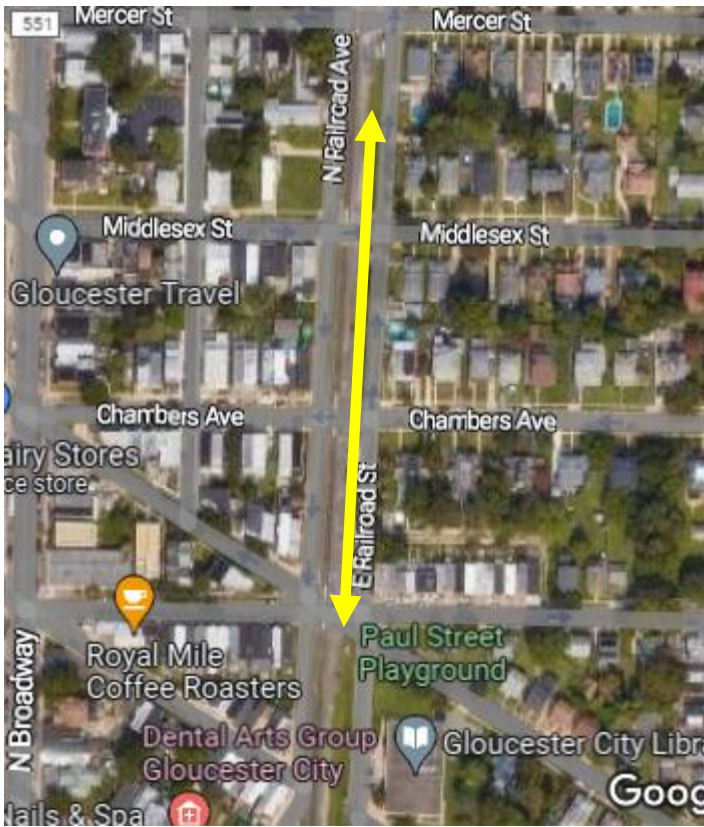
Pennsauken NJ-- Riverfront Village at Pennsauken Apartments (75 families, some are 120 ft. from railway)



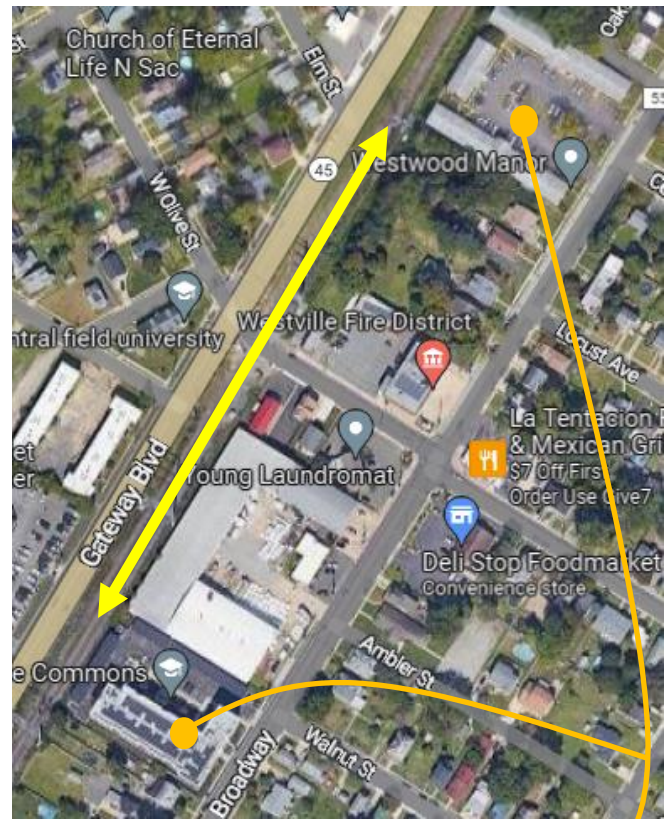
Camden NJ-- new homes on 3000 blocks of Hope and Lemuel Streets (approx. 60 families)



Camden NJ-- Liberty Park Townhomes (approx.165 units)



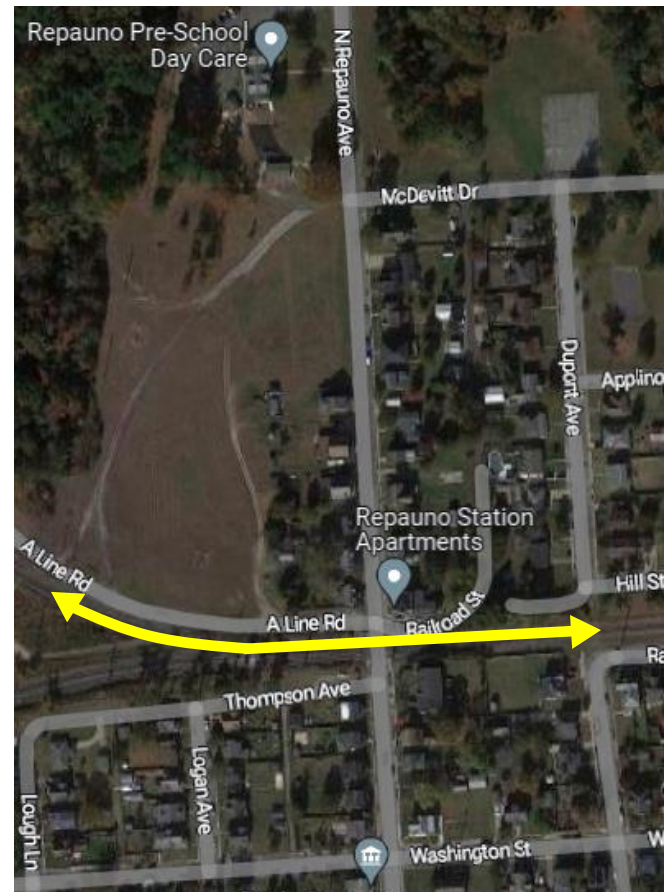
Gloucester City NJ



Westville NJ-- Westville Commons, Westwood Manor:
two apartment complexes (64 + 79 units)



Woodbury NJ: Woodbury Mews retirement
community (238 residents-- 140 ft. from railway)



Gibbstown NJ